



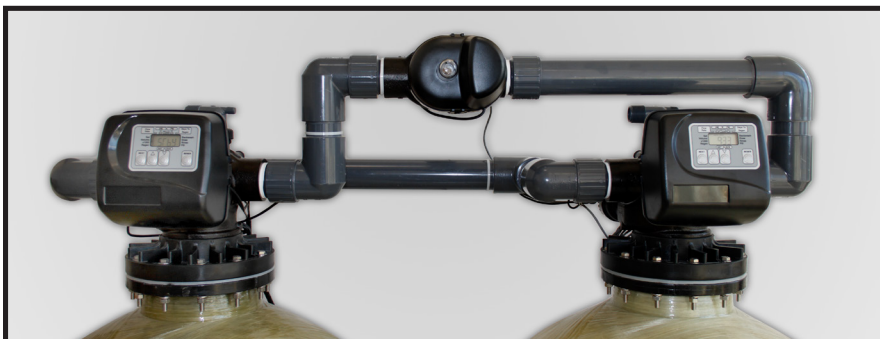
# ***Water Specialist 2.0" NPT or BSPT Motorized Alternating Valve***



Certified to NSF/ANSI 61 and 372.

**Order No. V3076 • NPT  
Order No. V3076BSPT • BSPT**

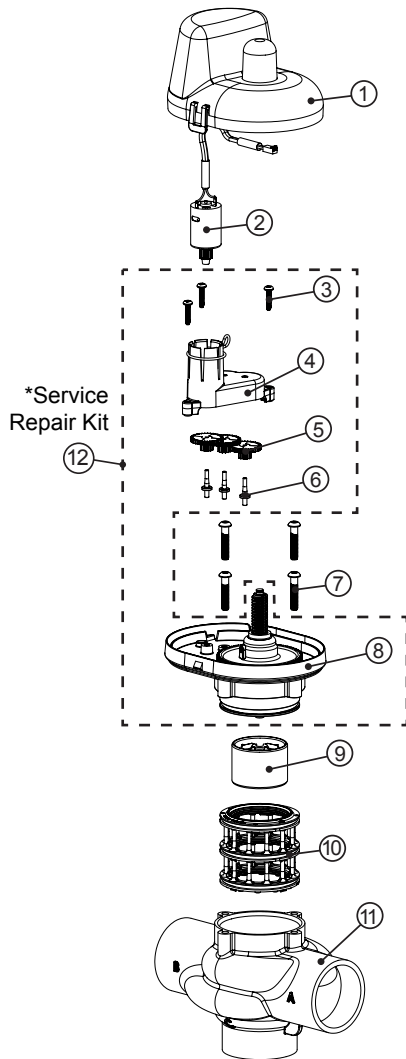
- 2" NPT and 2" BSPT
- Epoxy coated lead free brass valve body\*
- Hydraulically balanced piston valve
- Allows for two WS2, WS2L, or WS2H Valves to be a Twin Alternating System
- Full 2" ports with minimal pressure loss
- Provides for no raw water bypass during regeneration
- Provides choices of treated or non-treated water regeneration
- Proven and reliable Clack DC drive assembly
- Low voltage drive assembly controlled by valve's circuit board
- Flow from Port A to Common has a 2.1 PSI drop at 90 GPM
- Flow from Port B to Common has a 1.4 PSI drop at 90 GPM
- Operating Pressures:  
20 PSI Minimum  
125 PSI Maximum
- Operating Temperatures:  
40°F Minimum  
110°F Maximum



**EXAMPLE OF A TWIN CONFIGURATION**

**Order No. V3076 • Description: MOTOR ALT VLV 2 NPT REV2**  
**or**  
**Order No. V3076BSPT • Description: MOTOR ALT VLV 2 BSPT REV2**

| Drawing No. | Order No.    | Description                    | Quantity |           |
|-------------|--------------|--------------------------------|----------|-----------|
|             |              |                                | V3076    | V3076BSPT |
| 1           | V3073        | MAV/NOHWBY COVER ASY           | 1        | 1         |
| 2           | V3476        | WS MOTOR ASY 8 FT              | 1        | 1         |
| 3           | V3592        | SCREW #8-3/4 PHPN T-25 SS      | 3        | 3         |
| 4           | V3262-01     | WS1.5&2ALT/2BY REDUCGEARCVRASY | 1        | 1         |
| 5           | V3110-01     | WS1 DRIVE REDUCING GEAR PLAIN  | 3        | 3         |
| 6           | V3264        | WS2 BYPASS REDUCTION GEAR AXLE | 3        | 3         |
| 7           | V3527        | SCREW 1/4-20 X 3/4 BHSCS SS    | 3        | 3         |
| 8           | V3078        | MAV/NOHWBY 2 DRIVE ASY         | 1        | 1         |
| 9           | V3634-01     | MAV/NOHWBY 2 PISTON            | 1        | 1         |
| 10          | V3077        | MAV/NOHWBY 2 STACK ASY         | 1        | 1         |
| 11          | V3633-01     | WS2 MAV BODY NPT               | 1        | N/A       |
|             | V3633-01BSPT | WS2 MAV BODY BSPT              | N/A      | 1         |
| Not Shown   | V3474        | WS ALT CONNECT CORD 8FT BLK    | 1        | 1         |
| *12         | V3043        | WS2 MAV & NHWB SERVICE PACK    |          |           |



**•Operating Pressures:**  
**20 PSI Minimum / 125 PSI Maximum**  
**•Operating Temperatures:**  
**40°F Minimum / 110°F Maximum**

