



Water Specialist 1.5" NPT or BSPT Motorized Alternating Valve



**Order No. V3071 • NPT
Order No. V3071BSPT • BSPT**

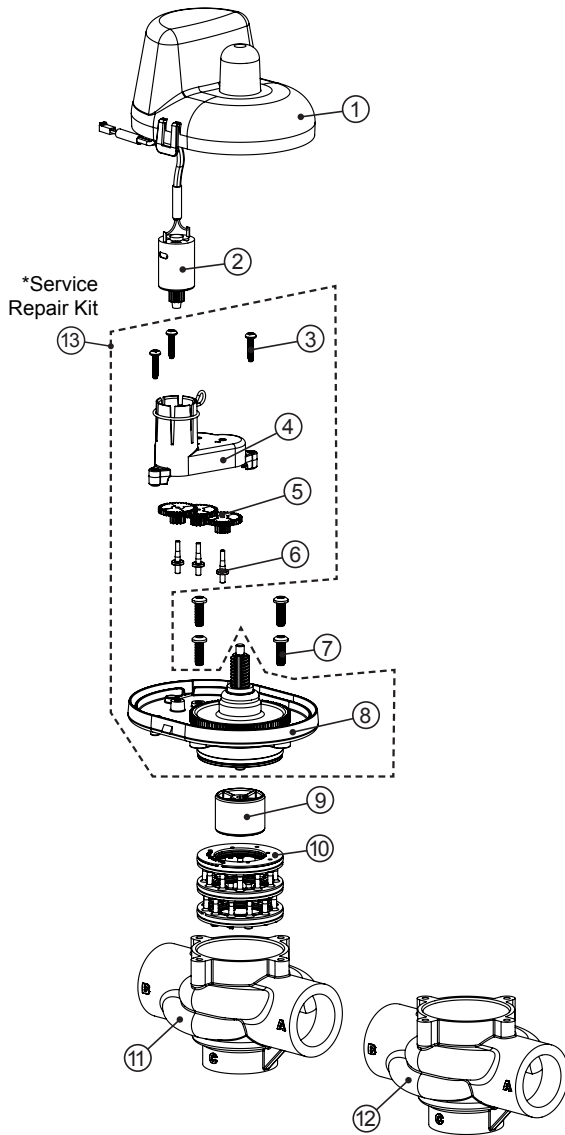
- 1.5" NPT or 1.5" BSPT Available
- Epoxy coated lead free brass valve body*
- Allows for two WS1.5 Valves to be a Twin Alternating System
- Full 1.5" ports with minimal pressure loss
- Provides for no raw water bypass during regeneration
- Provides choices of treated or non-treated water regeneration
- Proven and reliable Clack DC drive assembly
- Low voltage drive assembly controlled by valve's circuit board
- Flow from Port A to Common has a 3.74 PSI drop at 60 GPM
- Flow from Port B to Common has a 2.15 PSI drop at 60 GPM
- Hydraulically Balanced Piston Valve
- Patented Seal/Spacer Stack Assembly
- Operating Pressures:
20 PSI Minimum
125 PSI Maximum
- Operating Temperatures:
40°F Minimum
110°F Maximum



EXAMPLE OF A TWIN CONFIGURATION

**Order No. V3071 • Description: MOTOR ALT VLV 1.5 NPT REV2 or
Order No. V3071BSPT • Description: MOTOR ALT VLV 1.5 BSPT REV2**

Drawing No.	Order No.	Description	Quantity	
			V3071	V3071BSPT
1	V3073	MAV/NOHWBY COVER ASY	1	1
2	V3476	WS MOTOR ASY 8 FT	1	1
3	V3592	SCREW #8-3/4 PHPN T-25 SS	3	3
4	V3262-01	WS1.5&2ALT/2BY REDUCGEARCVRASY	1	1
5	V3110-01	WS1 DRIVE REDUCING GEAR PLAIN	3	3
6	V3264	WS2 BYPASS REDUCTION GEAR AXLE	3	3
7	V3527	SCREW 1/4-20 X 3/4 BHSCS SS	4	4
8	V3072	MAV/NOHWBY 1/125/15 DRIVE ASY	1	1
9	V3506-01	MAV/NOHRD 1/125/15 PISTON	1	1
10	V3074	MAV/NOHWBY 1/125/15 STACK ASY	1	1
11	V3525-01	MAV BODY 1.5 NPT	1	N/A
12	V3525BSPT-01	MAV BODY 1.5 BSPT	N/A	1
Not Shown	V3474	WS ALT CONNECT CORD 8FT BLK	1	1
*13	V3042	WS1/1.25/1.5 MAV & NHWB SERVICE PACK		



**•Operating Pressures:
20 PSI Minimum / 125 PSI Maximum**

**•Operating Temperatures:
40°F Minimum / 110°F Maximum**

